



# AACMS

## Announcer



HAPPY

# Hanukkah

To all in our community who celebrate!  
Chag Sameach!

## Upcoming Events

### December

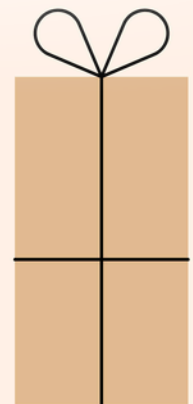
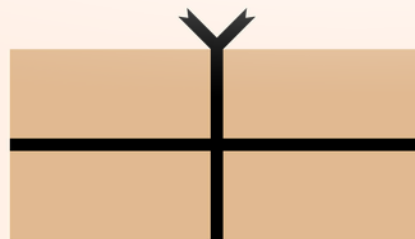
- 13** Visual Arts Holiday Pop Up Shop at Jay's Local  
12pm–2pm
- 15** School Board Meeting 6pm
- 17** Music Department Winter Concert 6:30pm
- 23** Early Dismissal 11:30am  
No Lunch Served

**24–Jan 2 Winter Break**



[View our complete calendar here.](#)

HELP SUPPORT ARTS ACADEMY CHARTER MIDDLE SCHOOL'S  
VISUAL ARTS DEPARTMENT!



PURCHASE HANDMADE GIFTS & PRINTS  
FROM AACMS VISUAL ARTS STUDENTS  
HOSTED BY JAYS LOCAL IN ALLENTOWN

## AACMS Holiday Pop Up Market



2301 Liberty St, Allentown  
Saturday December 13th • 12–2pm

AACMS Music Department  
*Winter Concert*

- ◆ Guitar
- ◆ Instrumental
- ◆ Vocal

*New Date!* *December 17<sup>th</sup>*  
*6:30pm*

**The Outlets at Wind Creek**  
77 Wind Creek Blvd  
Bethlehem, PA 18015

Please note: ALL students—both those performing and those attending in the audience—must be accompanied by an adult at all times while in the outlets, as required by Wind Creek. Minors who are unaccompanied will face consequences from security and police officers who survey the premises. Thank you for your cooperation.

THE  
LEHIGH VALLEY CHORALE  
PRESENTS

December 12, 2025 7:30PM  
December 13, 2025 2:00PM

First Presbyterian Church  
3231 W. Tilghman St. Allentown, PA

*a  
Crowded  
Table*

Come out  
to hear  
Principal Hill  
sing in this  
concert!



WINTER CHORAL CONCERT SERIES

◀ More Information & Advance Tickets  
LVChorale.org • 484-548-0052



GIVE THE GIFT OF  
**AACMS** *Logowear*



*Visit*  
**teepublic.com/aacms**





## Winter Break News

**Tuesday, December 23<sup>rd</sup> is now an Early Dismissal Day for all students at 11:30am. Bussing will be provided; NO LUNCH will be served.**



**School will be CLOSED from Wednesday, December 24<sup>th</sup> through Friday, January 2<sup>nd</sup>. We will reopen Monday, January 5<sup>th</sup>.**



**AACMS  
Community  
Pantry**

**The ACP will resume Friday, December 12<sup>th</sup> & December 19<sup>th</sup>.**

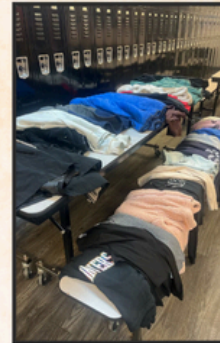
**You MUST fill out a form for your student to receive a bag.**

**If you would like your student to continue to receive a bag, please fill out this form. Check your email for more details.**

## LOST & FOUND!



**PLEASE CLAIM YOUR LOST ITEMS!**



**WE HAVE MANY UNCLAIMED ITEMS IN OUR LOST & FOUND BIN! PLEASE GO THROUGH AND CLAIM YOUR ITEMS BEFORE DECEMBER 23. ALL ITEMS LEFT IN THE BIN WILL BE DONATED DURING WINTER BREAK.**

**CLAIM BY 12/23**



## NO BLANKET RULE

**Students are NOT permitted to bring blankets to school or use them during the school day.**

**This is a violation of our student code of conduct. Please ensure that your student is leaving their blanket at home. Thank you for your cooperation.**

**X NO**



**✓ YES**



Our school is now collecting gently used

# CLOTHES and SHOES

*drive-up drop-off and go!*



**tree machine**  
gently used clothes and shoes

**ACCEPTED:**  
Gently used Clothes, Shoes, Hats, Handbags, Belts, Bedding, Linens, Etc.

**NOT ACCEPTED:**  
Furniture, Books, Rugs, Mattresses, Toys  
DO NOT LEAVE ANYTHING ON THE FLOOR

FOR EVERY FULL BIN, 1 TREE IS PLANTED!

SUPPORT REUSE

**tree machine**

## DONATIONS WANTED

## Clothing Needed in the Health Room!

We are in need of men's & women's

- **Sweatpants**
- **Leggings**
- **Athletic Shorts**
- **Sweatshirts**

Please also consider sending in a change of clothing for your student to be kept in their locker in case of an emergency.



## SAP Spotlight:

### Signs of Self-Harm

Self-harm may include actions other than cutting. Other signs to look for include:

- hair pulling
- excessive scratching (to the point of drawing blood)
- burns

Individuals who self-harm may also be experiencing symptoms of depression. Self-harm is not always an indicator of suicidal ideation, but should be taken seriously and treated by a professional. **Read More**

Make a report to SAP: [Sap@arts-cs.org](mailto:Sap@arts-cs.org)

The SAP team connects struggling students with resources to help them overcome any barriers so they can be successful in all areas of their lives.

Questions? Contact our SAP Coordinator, Ms. Leinbach at [leinbach@aacms.org](mailto:leinbach@aacms.org)

## AACMS CLASSROOMS ARE FRAGRANCE-FREE ZONES



FOR THE HEALTH & SAFETY OF OUR STUDENTS & STAFF, WE ASK THAT PERFUMES AND SCENTED LOTIONS NOT BE BROUGHT INTO THE CLASSROOM AND USED. ALL FRAGRANCE PRODUCTS MUST BE APPLIED AT HOME AND LEFT AT HOME. NOT FOLLOWING THIS POLICY WILL BE A CODE OF CONDUCT ISSUE RESULTING IN A DISCIPLINARY REFERRAL.



**Susan Ott**  
Communications Director  
[sott@aacms.org](mailto:sott@aacms.org)

[aacms.org](http://aacms.org)

